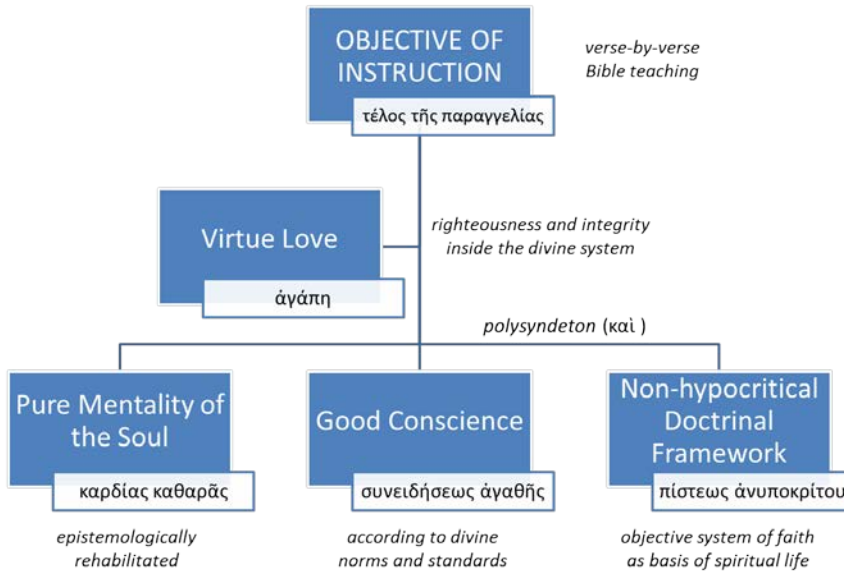


Timothy Charts and Graphs



THE LAW APPLIES TO:

- Lawless ones
- Unruly ones
- Ungodly ones
- Chronic sinners
- Wicked ones
- Profane ones
- Murderers
- Fornicators
- Homosexuals
- Slave-traders
- Kidnappers
- Pathological liars
- Perjurers
- Anyone else opposed to Bible doctrine

THE LAW DOES NOT APPLY TO:

- A grace-oriented Christian

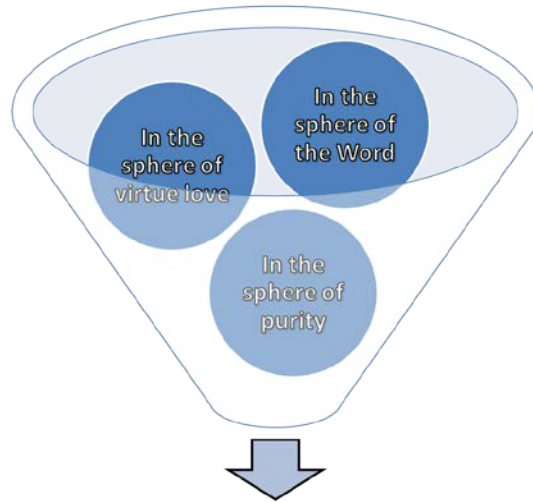
REFERENCE	CHORUS	CONTENT OF STANZA
I Tim. 1:15	Faithful <i>is</i> the Word	Christ Jesus saves sinners
I Tim. 3:1	Faithful <i>is</i> the Word	Guardian-overseer is a noble office
I Tim. 4:8-9	Faithful <i>is</i> the Word	Rewards for living the spiritual life
II Tim. 2:11-13	Faithful <i>is</i> the Word	We will share His eternal life
Titus 3:4-8	Faithful <i>is</i> the Word	We inherit spiritual blessings

δέησις	entreaties	private requests for needs and desires
προσευχή	prayers	public expression of worship for others
ἔντευξις	intercessions	petitions for others, e.g., for healing
εὐχαριστία	thanksgivings	expressing gratitude to God for His blessings

πίστις	Saturate the mentality of the soul with Bible doctrine
ἀγάπη	Exercise virtue love
ἀγιασμός	Maintain the filling of the Spirit

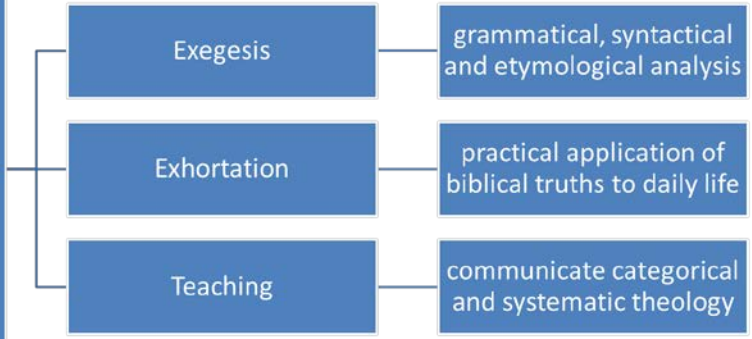
σωφροσύνη	Apply Bible doctrine with sound judgment
-----------	--

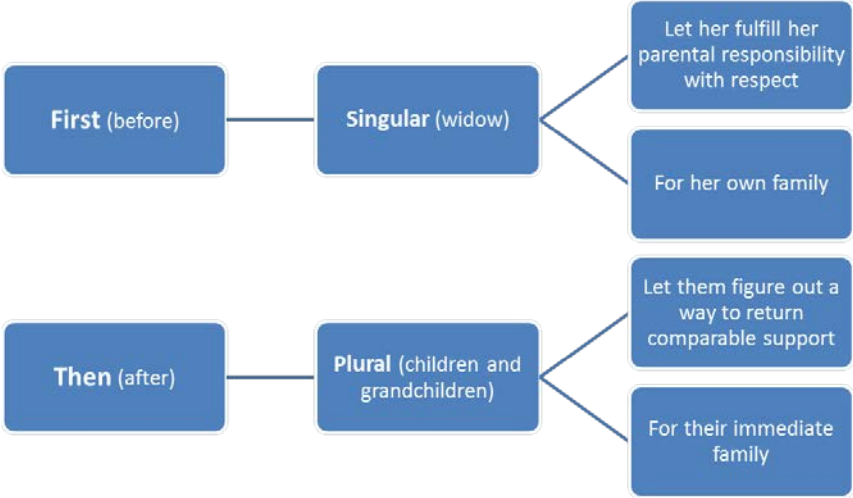
<i>poimen</i>	<i>shepherd-overseer</i>
<i>presbuteros</i>	<i>command-overseer</i>
<i>episkopos</i>	<i>guardian-overseer</i>
<i>didaskalos</i>	<i>teacher-overseer</i>



Appropriate Christian behavior as exemplified by the application of Bible doctrine in the soul to daily life

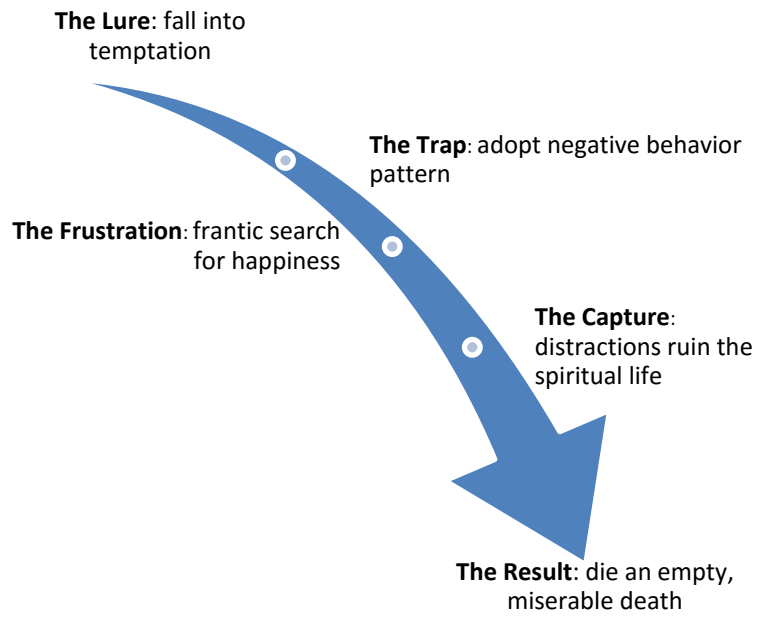
CONCENTRATE ON:

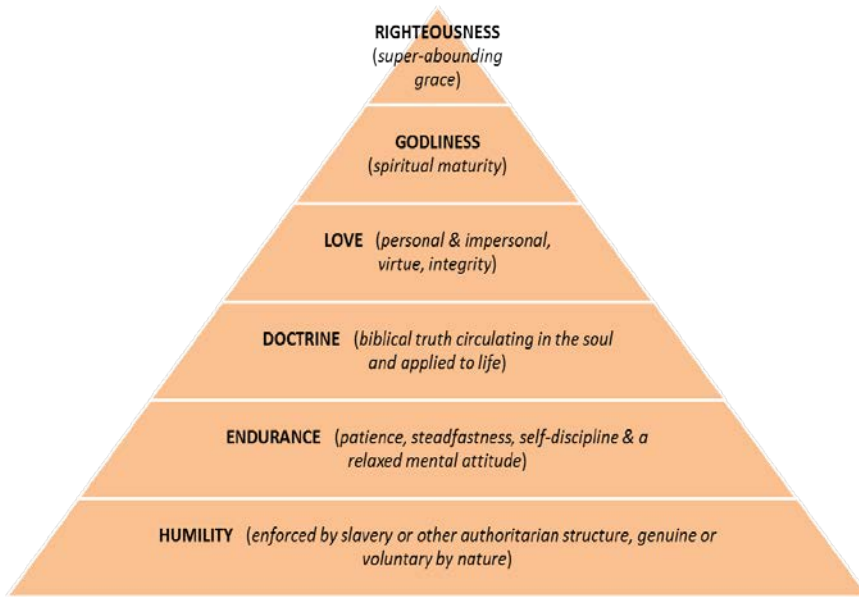


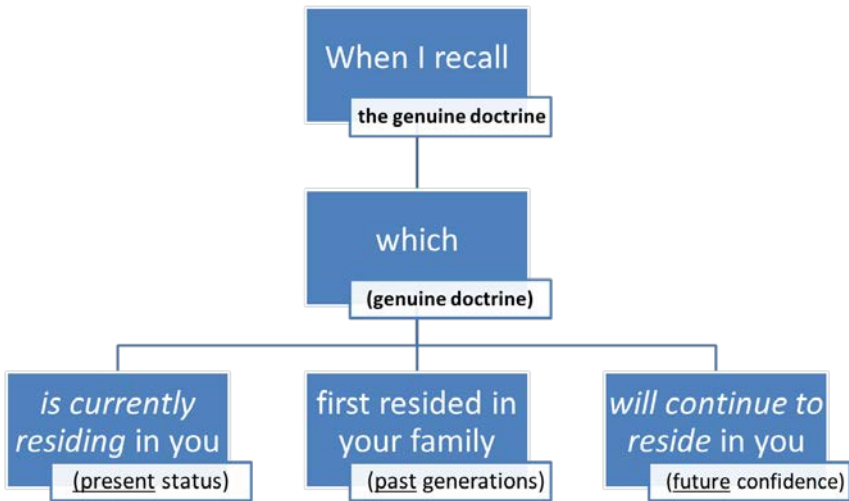


Widow Charity List Qualifications

1. Must be a Christian
 2. Has confidence in God
 3. Is a prayer warrior for herself and others
 4. Does not indulge in unnecessary luxury
 5. Must be sixty years of age
 6. Was faithful to her husband
 7. Has no support from children or grandchildren
 8. Certified by honorable accomplishments
 - a. Teaches children well (good role model)
 - b. Exhibits hospitality with impersonal love
 - c. Is grace-oriented from doctrine in her soul
 - d. Assists those in emotional distress
 - e. Devotes herself to being filled with the Spirit
-
-







Soldier	Athlete	Farmer
Bear hardships	Train enthusiastically	Work hard
Avoid entanglements	Follow the rules	
Serve with distinction		
Endurance	Discipline	Perseverance
Concentration	Exertion	Persistence
No distractions	No halfheartedness	No cessation
↓	↓	↓
Victory	Prize	Crop
Commendation	Winner's crown	Share of the bounty

Verse 10	Verse 11	Phase	Timing
Obtain the salvation which is in Christ Jesus	If we died in Him	Justification- salvation	Retroactive positional truth
Along with eternal glory	Then we shall live with Him	Glorification -salvation	Future positional truth

